



**Jim Engineering Company**  
(Committed To Excellence & Quality)

# Contents

- + Director Message
- + Introduction
- + Field of Activities
- + Company Policies
- + Contact Information

## Director Message

**In the Name of Allah, the Most Beneficent, the Most Merciful**

**Our Dear valuable Patrons,**

We are earnestly thankful to Almighty Allah for giving us this unique opportunity to serve our valuable clientele, as a part of the great Islamic Republic of Pakistan and all over the world. We are continuously and very keenly knowing and eavesdrop the client's demand(s) and we are committed under the roof of **Jim Engineering Company (JIMECO)** a project by **Panjtan Pak Group** to provide our superlative engineering, project management and all allied activities/services and proficiencies to you up to the mark of satisfaction. We pledge to strive for enhancing excellence with the sincere cooperation of its hardworking and studious employees and valuable patrons.

We are committed to gain professional excellence, both at national and international levels by creating environment conducive to professional(s) in engineering sector, project management and all allied activities collectively and individually. We gain more confidence from all the valuable clients by their collaborations and long-lasting affiliation.

In order to achieve the above targets, we need to work together diligently, improve our work habits, modify existing policies (where required), enhance work efficiency and restore professional credibility, which used to be the hallmark of **JIMECO** and become an asset, source of our better livelihood and our pride, so we need to strive hard for raising its respect, continued growth and uplifting its proficient stature. Let us put all of our efforts and energies together to make **JIMECO** a superior organization.

May Allah give us the strength and the much-needed direction for making the **Jim Engineering Company** a blissful and proud professional **JIMECO Group**.

**Assuring you of our best services and cooperation.**

**“We feel honor to serve you”.**

For and on behalf of **JIMECO**

**Director**

## Introduction

**Jim Engineering Company (JIMECO)** a project by **Panjtan Pak Group** is led by team of professional(s) from different fields of engineering and management.

We feel profound pleasure to apprise your good self about **Jim Engineering Company**. We are committed to provide our endures practical, technical, project management, construction management and engineering services to Housing Scheme Developers & Builders, Engineering, Procurement & Construction (EPC) Contractors, Turnkey Project Contractors for execution of Residential & Commercial Blocks, Electrification of Societies, Transmission Lines, Grid Stations, Telecommunication, Power Plant Projects from start to an end respectively, including civil work, assembling & erection of steel structures and towers along with stringing activities (Conductor, OPGW & Shield wire etc.) and fabrication & machining works of materials etc...

Besides this we are providing our assistance to International Manufacturers, Vendors and Contractors for participating in Engineering, Procurement & Construction (EPC) Contracts, Turnkey Projects and Supply Contracts under International Competitive Bidding (ICB) for supplying of their products, plants & equipment's and services in Islamic Republic of Pakistan.

We are also working in the signage sector which includes traffic safety signs, industrial safety signs, directional signs, warning signs, etc. We are one house solution for all your needs, wants and demands in engineering sector. We believe on continuous growth by hardwork and dedicated services of our company and we have achieved our first step to introduce our company with new name in the engineering industry.

## Field of Activities

### ✓ **Project Management**

All the projects are supervised and executed by the specialised project managers for execution as per specifications and standards from start to end of the project as per dedicated Project Management & Execution Plans.

### ✓ **Construction Management**

Complete construction management services for Residential & Commercial Blocks from grey structure to finishing level and EPC Projects are provided by the dedicated site staff and professionals for timely completion of all Site activities as per established construction schedules.



### ✓ **Engineering Design**

Detailed engineering designs for all residential and commercial blocks are prepared through state of the art technologies, innovative ideas, conceptual designs on national and international standards. Customized designs also prepared as per the specific requirement of the clients.

## ✓ Interior Design

Completed conceptual interior designs for residential and commercial blocks are prepared through state of the art technologies, inovative ideas, conceptual designs on national and international standards with 2D and 3D models for better understanding of clients and for execution at site.



## ✓ LT/HT Electrification

Low Transmission (LT) and High Transmission (HT) overhead and underground electrification of newly establishing residential socities and blocks, installation of electric poles, street lights, pad moundated transformers etc. are executed by dedicted professionals.



## ✓ **Renovation/Repair Works**

All renovation and repair works of all residential and commercial blocks are custom based and as per requirement of the client.

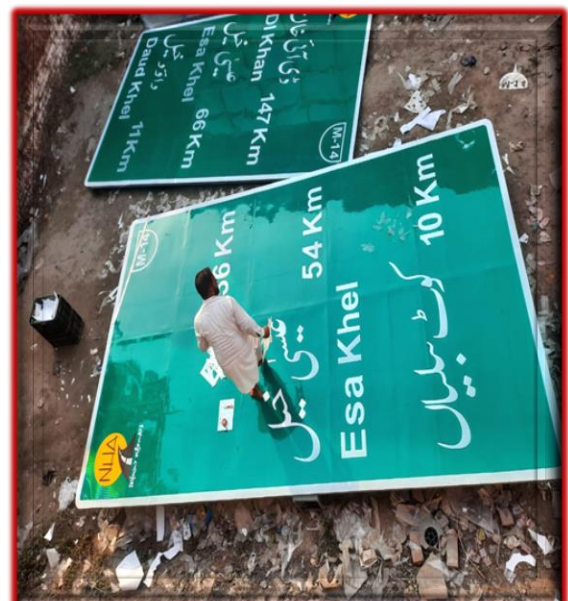
## ✓ **Fabrication/Machining Works**

Providing customized technical, manufacturing, fabrication and machining services to Auto Industry, Food & Beverages Industry, Medical, Defence Sector and PP Woven Bags machinery parts etc, through in house CNC machines, Injection Molding machines.



## ✓ **Installation/Signage Works**

Providing fabrication and on site installation services to Signage Sector including traffic safety signs, Industrial Safety Signs, Directional Signs, Warning Signs etc..



## ✓ **Trading Services**

Providing our trading services of different spare parts, electrical equipments, machining parts etc. to vendors as per their requirements and market demands.

## ✓ **Projects Locations**

We are continuously providing our services to our valuable clients in different fields and sectors. Successfully completed our projects in followings Schemes:

- NECHSL
- PGECHS
- Bahria Town
- Al-Kabir Town
- Zaman City
- DHA Rahber
- Dream Gardens

## Company Policies

### Quality Policy

We at **Jim Engineering Company (JIMECO)** are devoted and committed to provide our best superiority engineering, project management and construction management services to the utmost satisfaction of our valuable clients and patrons in all sectors with dedication and enthusiasm. **“Your satisfaction is our Quality Policy”**.

### Environmental & Safety Policy

We at **Jim Engineering Company (JIMECO)** follows the health & safety measures and all employees are bond to follow the rules and regulations of the company for sustaining environment friendly atmosphere. **JIMECO** believes on adopting safe environmental working and management practices in its day by day activities.

### Code of Conduct

All the employees are bound to abide by the Code of Conduct irrespective of the rank and grade of the employee. For company all employee has the equal rights and freedom of expression. All employees are instructed and bound to maintain Company's Prestige and repote along with the all patrons. Employees are fully bound to maintain the image of the company by all fair means and dealing with all the stakeholders.

## Contact Information

**Company Name:** Jim Engineering Company

**Contact(s):** +92-334-9967491, +92-300-4054757

**WhatsApp:** +92-334-9967491, +92-300-4054757

**Email:** [info@jimecogroup.com.pk](mailto:info@jimecogroup.com.pk)

**Website:** <https://jimecogroup.com.pk>

**Office Address:** 212 C-1 NECHSL, College Road, Township, Lahore, Pakistan.